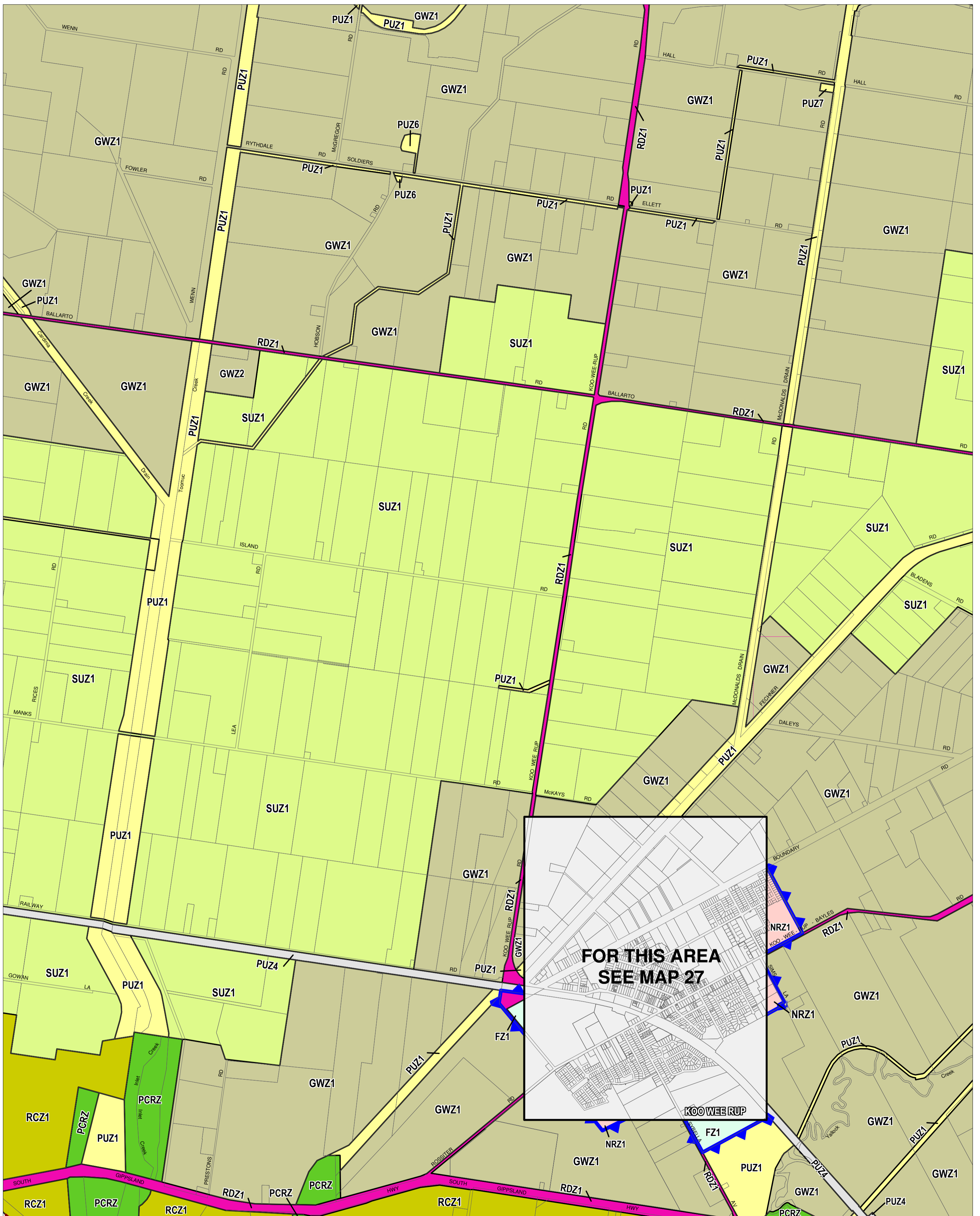


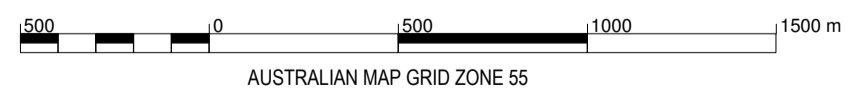
# CARDINIA PLANNING SCHEME - LOCAL PROVISION



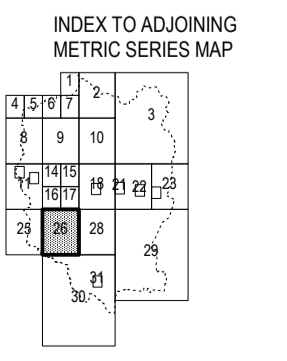
**FOR THIS AREA  
SEE MAP 27**

This publication is copyright. No part may be reproduced by any process except in accordance with the provisions of the Copyright Act. © State of Victoria.

Public Land	Rural	Special Purpose
<ul style="list-style-type: none"> <li>Public Conservation And Resource Zone</li> <li>Public Use Zone - Local Government</li> <li>Public Use Zone - Other Public Use</li> <li>Public Use Zone - Service And Utility</li> <li>Public Use Zone - Transport</li> </ul>	<ul style="list-style-type: none"> <li>Farming Zone - Schedule 1</li> <li>Green Wedge Zone - Schedule 1</li> <li>Green Wedge Zone - Schedule 2</li> <li>Rural Conservation Zone - Schedule 1</li> </ul>	<ul style="list-style-type: none"> <li>Special Use Zone - Schedule 1</li> </ul>
<ul style="list-style-type: none"> <li>Neighbourhood Residential Zone - Schedule 1</li> </ul>		



AUSTRALIAN MAP GRID ZONE 55



Printed: 9/10/2014

AMENDMENT C178