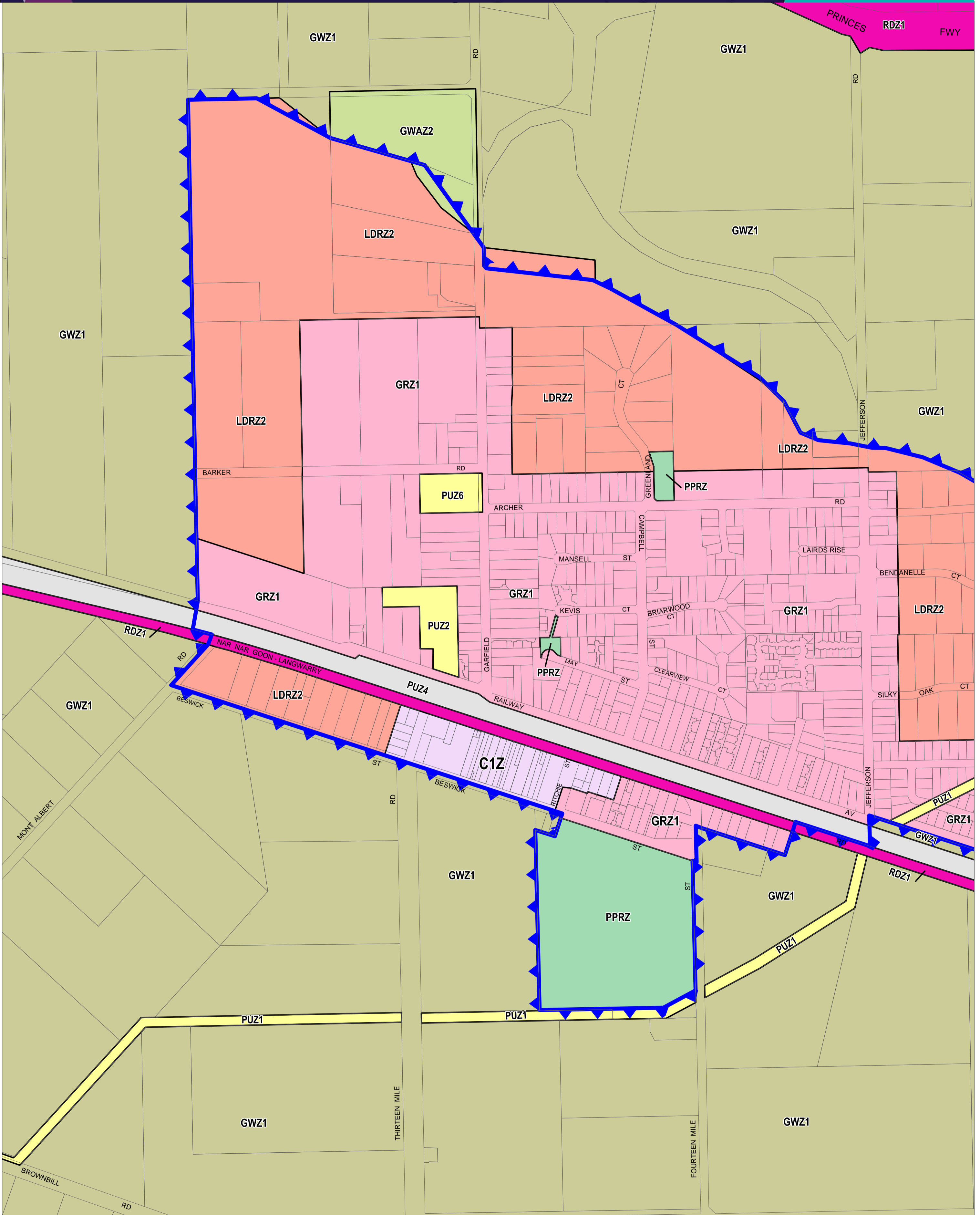


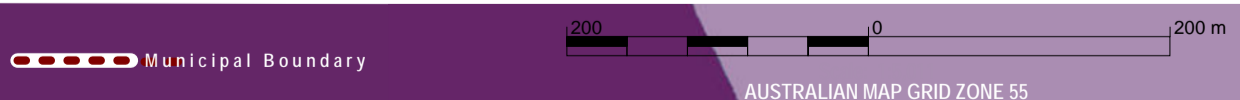
# CARDINIA PLANNING SCHEME - LOCAL PROVISION



This publication is copyright. No part may be reproduced by any process except in accordance with the provisions of the Copyright Act. © State of Victoria.

This map should be read in conjunction with additional Planning Overlay Maps (if applicable) as indicated on the INDEX TO MAPS.

<b>Commercial</b>	<b>LDRZ2</b> Low Density Residential Zone - Schedule 2
<b>C1Z</b> Commercial 1 Zone	<b>GWAZ2</b> Green Wedge A Zone - Schedule 2
<b>Public Land</b>	<b>GWZ1</b> Green Wedge Zone - Schedule 1
<b>PPRZ</b> Public Park And Recreation Zone	
<b>PUZ2</b> Public Use Zone - Education	
<b>PUZ6</b> Public Use Zone - Local Government	
<b>PUZ1</b> Public Use Zone - Service And Utility	
<b>PUZ4</b> Public Use Zone - Transport	
<b>RDZ1</b> Road Zone - Category 1	
<b>Residential</b>	
<b>GRZ1</b> General Residential Zone - Schedule 1	



PREPARED BY: Planning Mapping Services

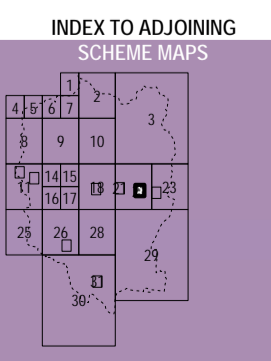


Printed: 24/10/2016

## AMENDMENT C188



Environment, Land, Water and Planning



## ZONES