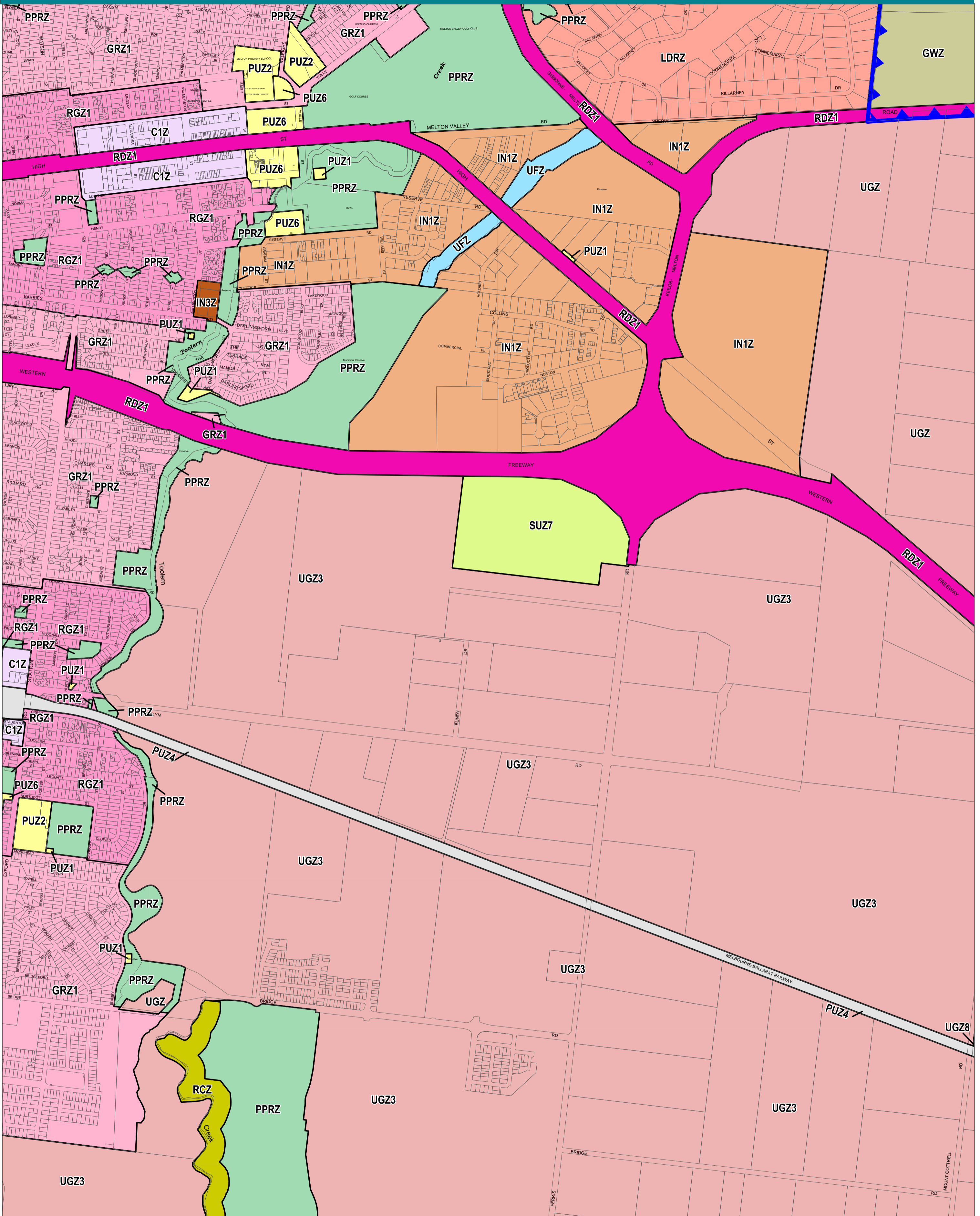
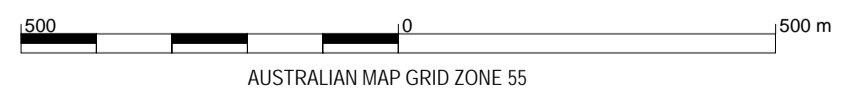


MELTON PLANNING SCHEME - LOCAL PROVISION

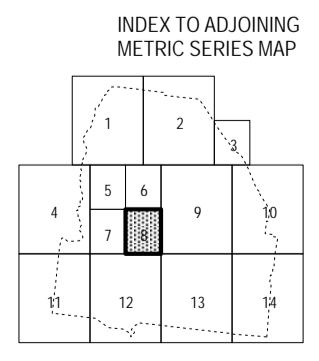


This publication is copyright. No part may be reproduced by any process except in accordance with the provisions of the Copyright Act. © State of Victoria.
 This map should be read in conjunction with additional Planning Overlay Maps (if applicable) as indicated on the INDEX TO MAPS.

| | | |
|---|--|--|
| Commercial C1Z Commercial 1 Zone | Public Use Zone - Transport PUZ4 | Urban Floodway Zone UFZ |
| Industrial IN1Z Industrial 1 Zone IN3Z Industrial 3 Zone | Road Zone - Category 1 RDZ1 | Urban Growth Zone UGZ |
| Public Land PPRZ Public Park And Recreation Zone PUZ2 Public Use Zone - Education PUZ6 Public Use Zone - Local Government PUZ1 Public Use Zone - Service And Utility | Residential GRZ1 General Residential Zone - Schedule 1 LDRZ Low Density Residential Zone RGZ1 Residential Growth Zone - Schedule 1 | Urban Growth Zone - Schedule 3 UGZ3 Urban Growth Zone - Schedule 8 UGZ8 |
| Rural GWZ Green Wedge Zone RCZ Rural Conservation Zone | Special Purpose SUZ7 Special Use Zone - Schedule 7 | |



AUSTRALIAN MAP GRID ZONE 55
 PREPARED BY: Planning Mapping Services



Printed: 10/3/2016

AMENDMENT C161