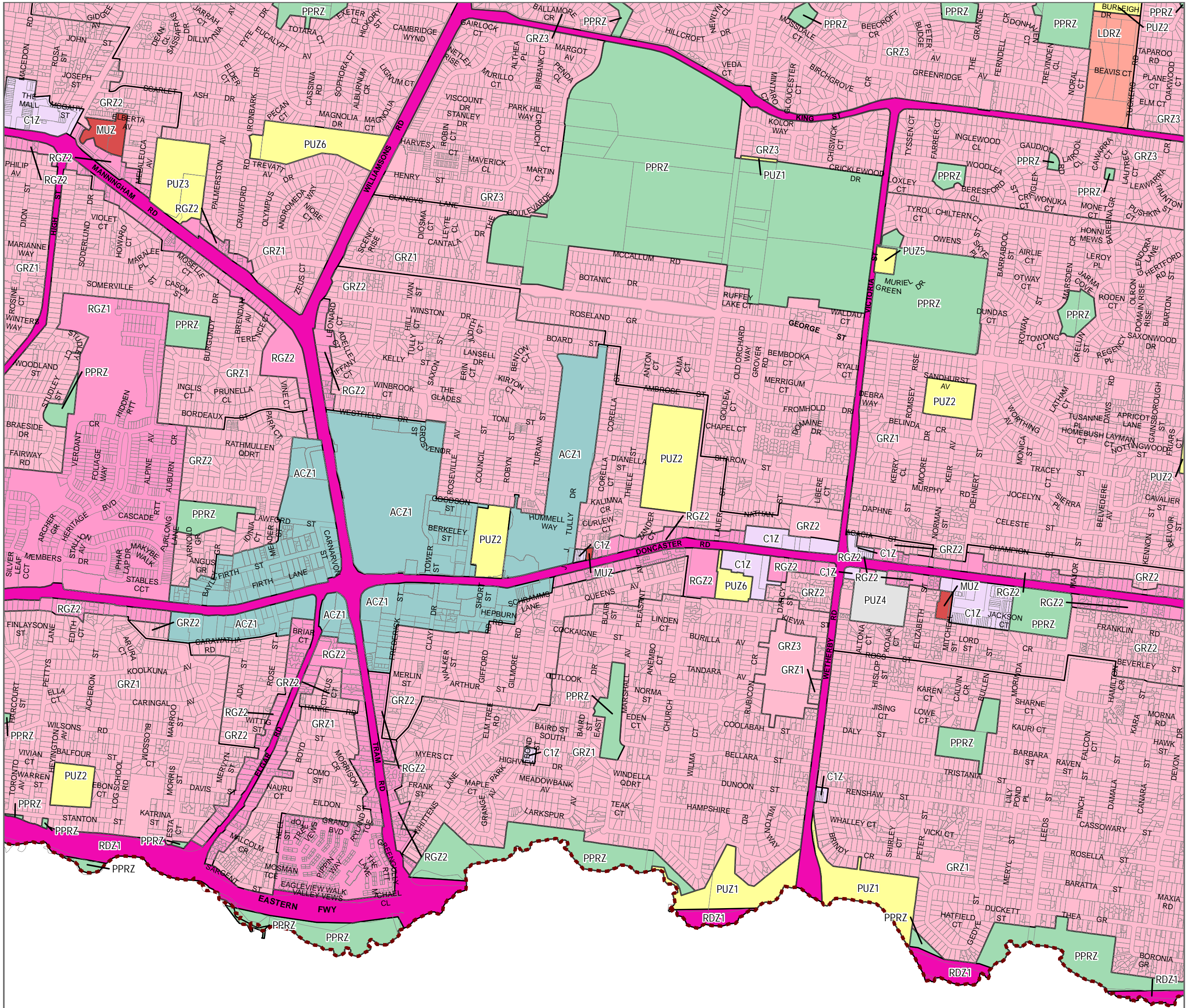


MANNINGHAM PLANNING SCHEME - LOCAL PROVISION



WHITEHORSE
CITY

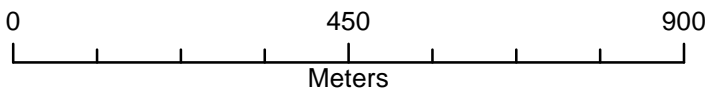
LEGEND

- | | |
|--|---|
| ACZ - Activity Centre Zone, ACZ | PUZ2 - Public Use Zone - Education |
| C1Z - Commercial 1 Zone | PUZ3 - Public Use Zone - Health and Community |
| GRZ - General Residential Zone | PUZ4 - Public Use Zone - Transport |
| LDRZ - Low Density Residential Zone | PUZ5 - Public Use Zone - Cemetery/Crematorium |
| MUZ - Mixed Use Zone | PUZ6 - Public Use Zone - Local Government |
| PPRZ - Public Park and Recreation Zone | RDZ1 - Road Zone - Category 1 |
| PUZ1 - Public Use Zone - Service and Utility | RGZ - Residential Growth Zone |



Disclaimer
This publication may be of assistance to you but the State of Victoria and its employees do not guarantee that the publication is without flaw of any kind or is wholly appropriate for your particular purposes and therefore disclaims all liability for any error, loss or other consequence which may arise from you relying on any information in this publication.

© The State of Victoria Department of Environment, Land, Water and Planning 2018



Planning Group
AMENDMENT C122
Printed: 10/05/2019



Environment,
Land, Water
and Planning

INDEX TO ADJOINING SCHEME MAPS

