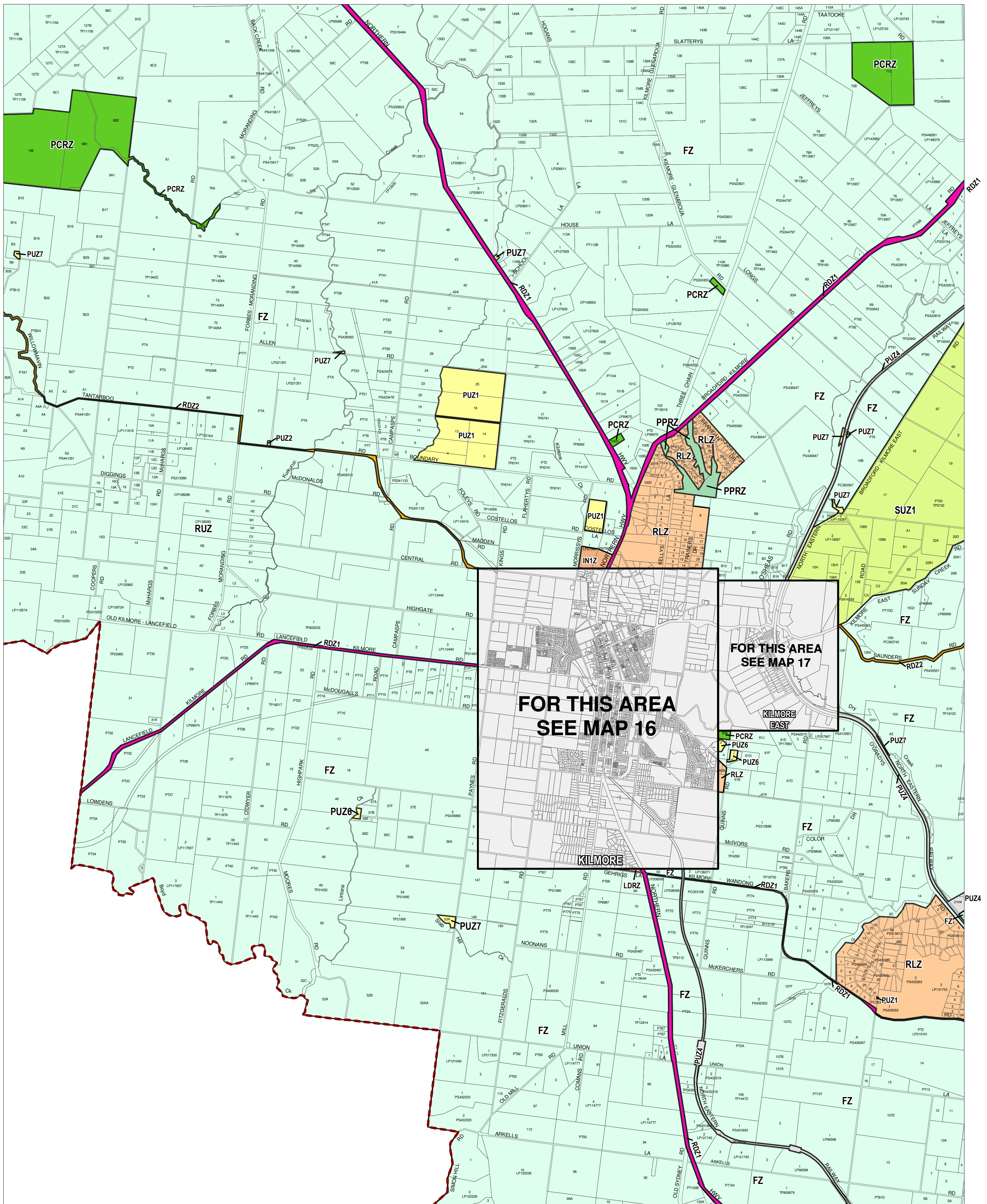


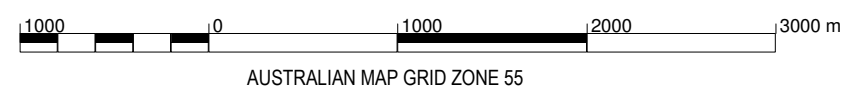
# MITCHELL PLANNING SCHEME - LOCAL PROVISION



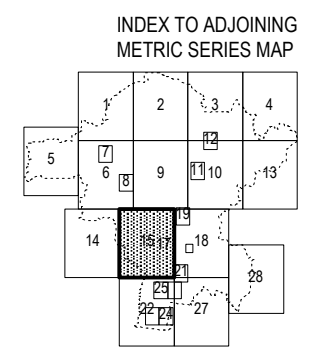
This publication is copyright. No part may be reproduced by any process in accordance with the provisions of the Copyright Act. © State of Victoria. This map should be read in conjunction with additional Planning Overlay Maps (if applicable) as indicated on the INDEX TO MAPS.

<b>Industrial</b>	<b>Public Land</b>	<b>Residential</b>	<b>Rural</b>	<b>Special Purpose</b>
IN1Z Industrial 1 Zone	PCRZ Public Conservation And Resource Zone	LDRZ Low Density Residential Zone	FZ Farming Zone	RDZ1 Comprehensive Development Zone - Schedule 1
PPRZ Public Park And Recreation Zone	PUZ2 Public Use Zone - Education	RDZ2 Road Zone - Category 2	RLZ Rural Living Zone	SUZ1 Special Use Zone - Schedule 1
PUZ6 Public Use Zone - Local Government	PUZ7 Public Use Zone - Other Public Use	RDZ1 Road Zone - Category 1	RDZ2 Road Zone - Category 2	
PUZ1 Public Use Zone - Service And Utility				

ALL LAND ON THIS MAP IS OUTSIDE THE URBAN GROWTH BOUNDARY



AUSTRALIAN MAP GRID ZONE 55



Printed: 8/5/2015

AMENDMENT C91 (PART 1)

ZONES

MAP No 15