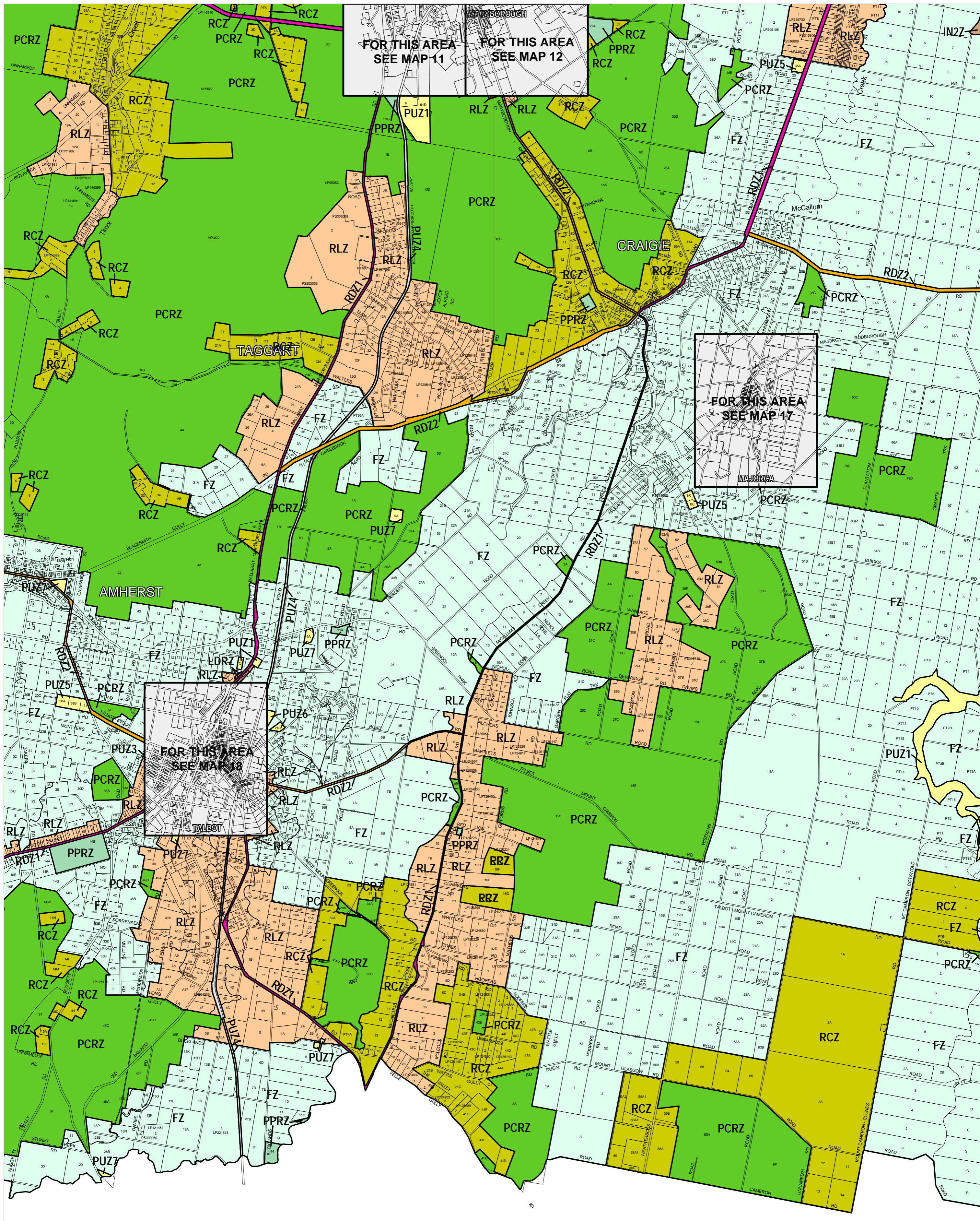


CENTRAL GOLDFIELDS PLANNING SCHEME - LOCAL PROVISION



This publication is copyright. No part may be reproduced by any process except in accordance with the provisions of the Copyright Act. © State of Victoria.

This map should be read in conjunction with additional Planning Overlay Maps (if applicable) as indicated on the INDEX TO MAPS.

Industrial	Industrial 2 Zone	PUZ1	Public Use Zone Service And Utility
Public Land	Public Conservation And Resource Zone	PUZ4	Public Use Zone Transport
PPRZ	Public Park And Recreation Zone	RDZ1	Road Zone Category 1
PUZ5	Public Use Zone Cemetery/crematorium	RDZ2	Road Zone Category 2
PUZ3	Public Use Zone Health And Community	Residential	
PUZ6	Public Use Zone Local Government	LDRZ	Low Density Residential Zone
PUZ7	Public Use Zone Other Public Use	FZ	Farming Zone
		RCZ	Rural Conservation Zone
		RLZ	Rural Living Zone

1000 0 1000 2000 3000 m

AUSTRALIAN MAP GRID ZONE 54

INDEX TO ADJOINING METRIC SERIES MAP

Printed: 2017/2006

AMENDMENT C9