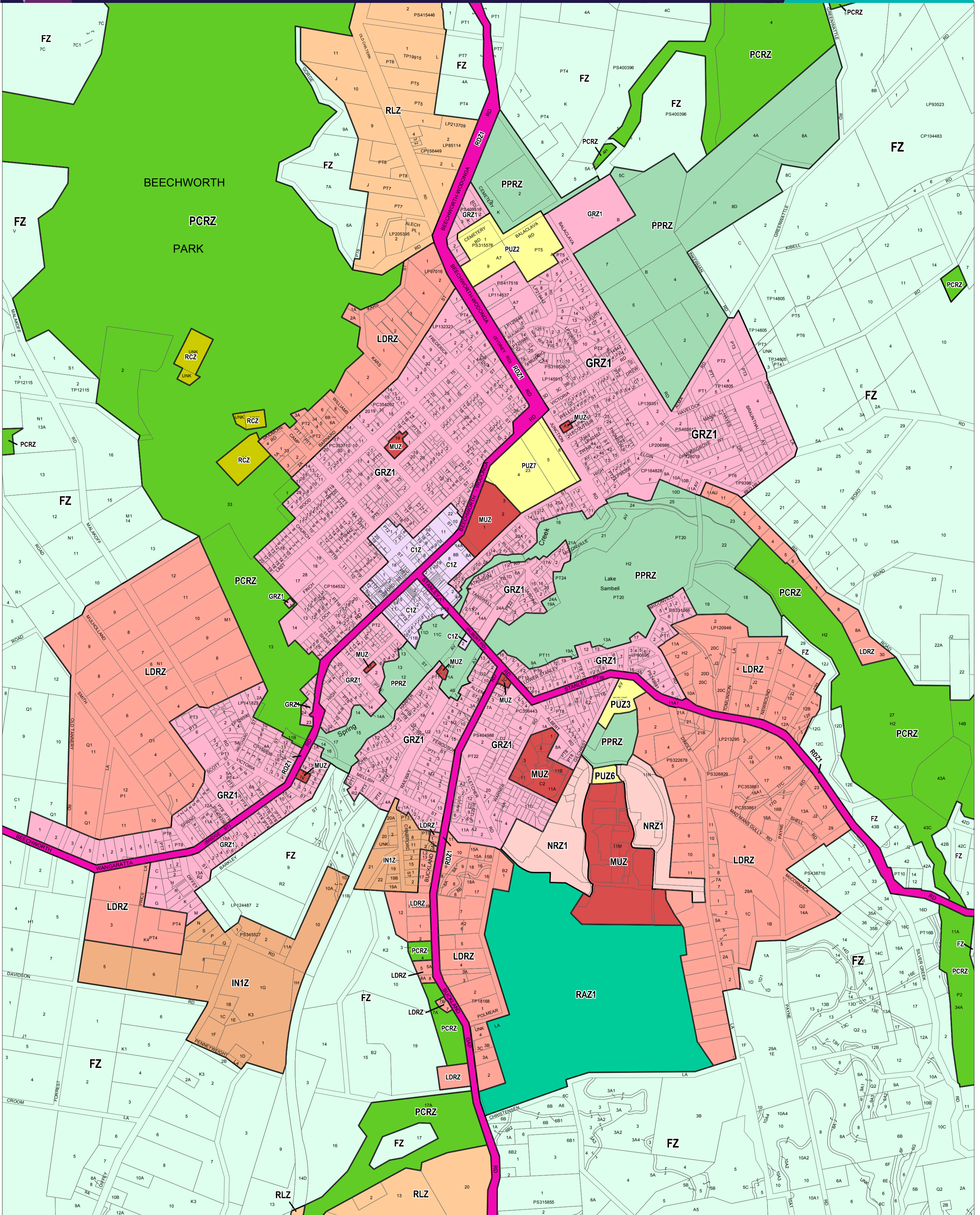


# INDIGO PLANNING SCHEME - LOCAL PROVISION



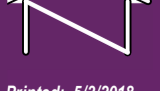
This publication is copyright. No part may be reproduced by any process except in accordance with the provisions of the Copyright Act 1968, State of Victoria. This map should be read in conjunction with additional Planning Overlay Maps (if applicable) as indicated on the INDEX TO MAPS.

|   |  |   |
|---|--|---|
| <b>Commercial</b>                           | <b>Public Use Zone - Other Public Use</b>        | <b>Rural Activity Zone - Schedule 1</b> |
| C1Z Commercial 1 Zone                       | PUZ7   | RAZ1                                    |
| <b>Industrial</b>                           | <b>Road Zone - Category 1</b>                    | <b>Rural Conservation Zone</b>          |
| IN1Z Industrial 1 Zone                      | RDZ1   | RCZ                                     |
| <b>Public Land</b>                          | <b>Residential</b>                               | <b>Rural Living Zone</b>                |
| PCRZ Public Conservation And Resource Zone  | GRZ1 General Residential Zone - Schedule 1       | RLZ                                     |
| PPRZ Public Park And Recreation Zone        | LDRZ Low Density Residential Zone                |   |
| PUZ2 Public Use Zone - Education            | MUZ Mixed Use Zone                               |   |
| PUZ3 Public Use Zone - Health And Community | NRZ1 Neighbourhood Residential Zone - Schedule 1 |   |
| PUZ6 Public Use Zone - Local Government     | <b>Rural</b>                                     |   |
|   | FZ Farming Zone                                  |   |

Municipal Boundary (if shown)

AUSTRALIAN MAP GRID ZONE 55

PREPARED BY: Planning Mapping Services

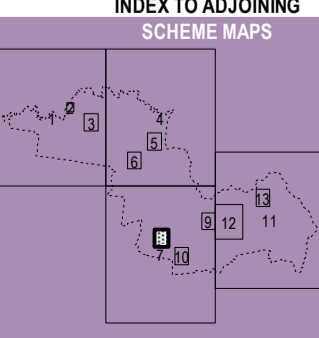


Printed: 5/3/2018

## AMENDMENT C73



Environment, Land, Water and Planning



## ZONES

## MAP No 8