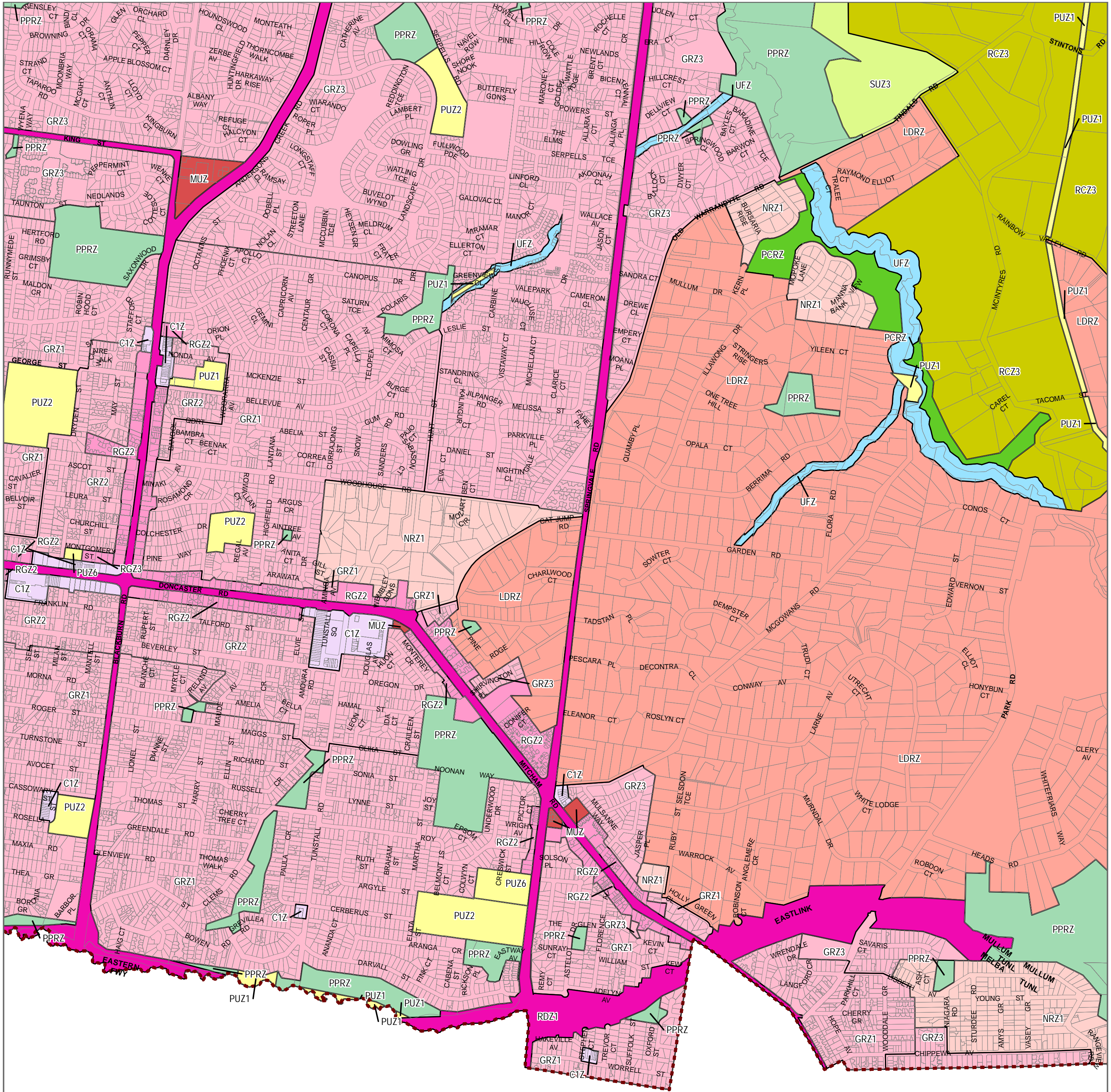


MANNINGHAM PLANNING SCHEME - LOCAL PROVISION



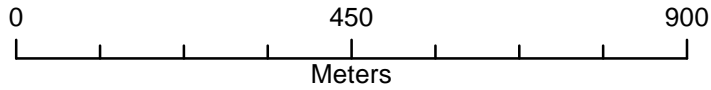
WHITEHORSE CITY

- LEGEND**
- C1Z - Commercial 1 Zone
 - GRZ - General Residential Zone
 - LDRZ - Low Density Residential Zone
 - MUZ - Mixed Use Zone
 - NRZ - Neighbourhood Residential Zone
 - PCRZ - Public Conservation and Resource Zone
 - PPRZ - Public Park and Recreation Zone
 - PUZ1 - Public Use Zone - Service and Utility
 - PUZ2 - Public Use Zone - Education
 - PUZ6 - Public Use Zone - Local Government
 - RCZ - Rural Conservation Zone
 - RDZ1 - Road Zone - Category 1
 - RGZ - Residential Growth Zone
 - SUZ - Special Use Zone
 - UFZ - Urban Floodway Zone



Disclaimer
This publication may be of assistance to you but the State of Victoria and its employees do not guarantee that the publication is without flaw of any kind or is wholly appropriate for your particular purposes and therefore disclaims all liability for any error, loss or other consequence which may arise from you relying on any information in this publication.

© The State of Victoria Department of Environment, Land, Water and Planning 2018



NORTH
Planning Group
AMENDMENT C122
Printed: 10/05/2019



Environment,
Land, Water
and Planning

INDEX TO ADJOINING SCHEME MAPS

