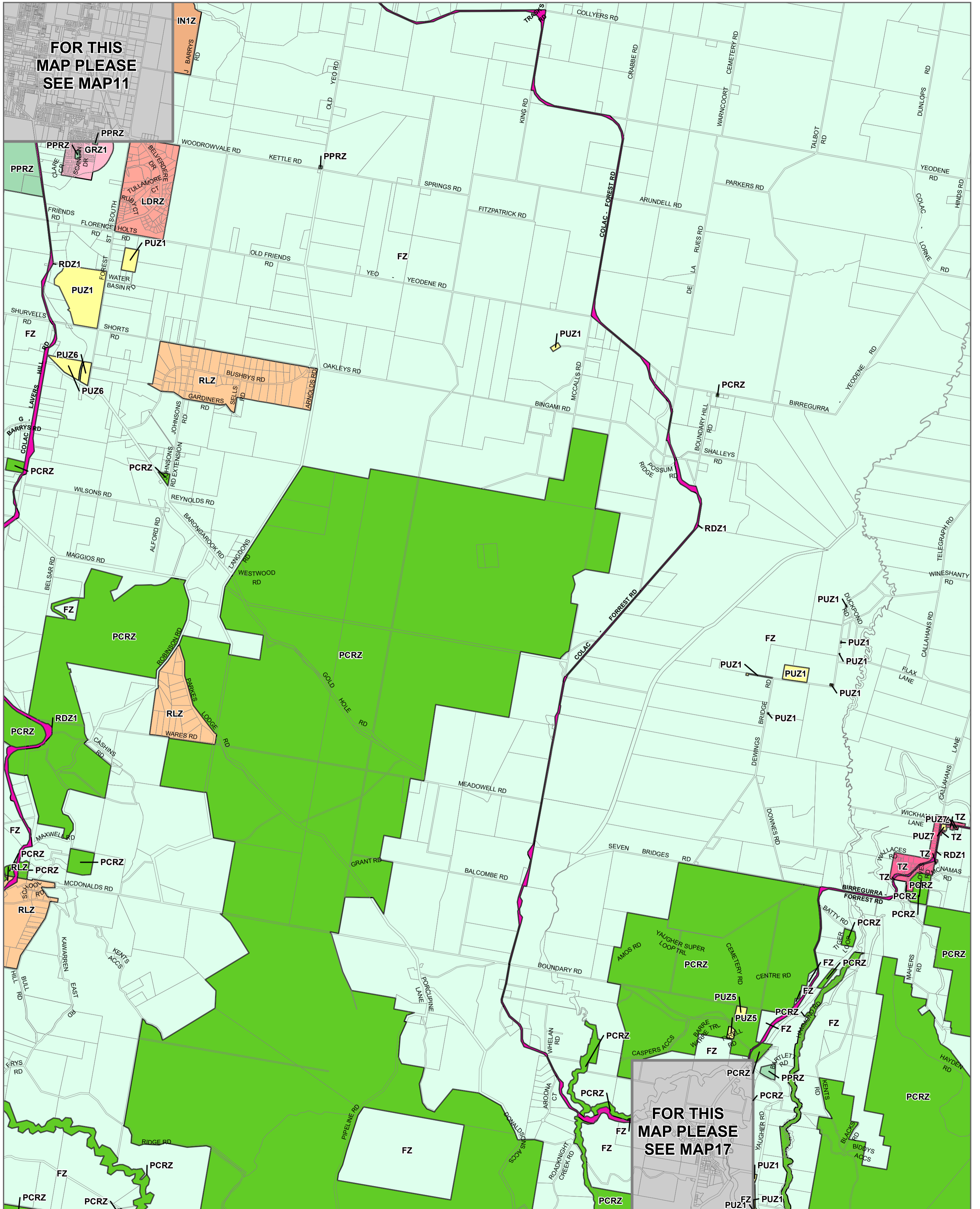


# COLAC OTWAY PLANNING SCHEME - LOCAL PROVISION



**LEGEND**

<span style="display:inline-block; width:10px; height:10px; border:1px solid black; background-color:#d9ead3;"></span> FZ - Farming Zone	<span style="display:inline-block; width:10px; height:10px; border:1px solid black; background-color:#fff2cc;"></span> PUZ5 - Public Use Zone - Cemetery/Crematorium	<span style="display:inline-block; width:10px; height:10px; border:1px dashed black;"></span> Municipal Boundary
<span style="display:inline-block; width:10px; height:10px; border:1px solid black; background-color:#d9ead3;"></span> GRZ1 - General Residential Zone	<span style="display:inline-block; width:10px; height:10px; border:1px solid black; background-color:#fff2cc;"></span> PUZ6 - Public Use Zone - Local Government	
<span style="display:inline-block; width:10px; height:10px; border:1px solid black; background-color:#d9ead3;"></span> IN1Z - Industrial 1 Zone	<span style="display:inline-block; width:10px; height:10px; border:1px solid black; background-color:#fff2cc;"></span> PUZ7 - Public Use Zone - Other Public Use	
<span style="display:inline-block; width:10px; height:10px; border:1px solid black; background-color:#d9ead3;"></span> LDRZ - Low Density Residential Zone	<span style="display:inline-block; width:10px; height:10px; border:1px solid black; background-color:#fff2cc;"></span> RDZ1 - Road Zone - Category 1	
<span style="display:inline-block; width:10px; height:10px; border:1px solid black; background-color:#d9ead3;"></span> PCRZ - Public Conservation and Resource Zone	<span style="display:inline-block; width:10px; height:10px; border:1px solid black; background-color:#fff2cc;"></span> RLZ - Rural Living Zone	
<span style="display:inline-block; width:10px; height:10px; border:1px solid black; background-color:#d9ead3;"></span> PPRZ - Public Park and Recreation Zone	<span style="display:inline-block; width:10px; height:10px; border:1px solid black; background-color:#fff2cc;"></span> TZ - Township Zone	
<span style="display:inline-block; width:10px; height:10px; border:1px solid black; background-color:#fff2cc;"></span> PUZ1 - Public Use Zone - Service and Utility		

**Disclaimer**  
 This publication may be of assistance to you but the State of Victoria and its employees do not guarantee that the publication is without flaw of any kind or is wholly appropriate for your particular purposes and therefore disclaims all liability for any error, loss or other consequence which may arise from you relying on any information in this publication.

© The State of Victoria Department of Environment, Land, Water and Planning 2020

0 1,750 3,500  
 Meters  
 Australian Map Grid Zone 54

**NORTH**  
 Planning Group  
**AMENDMENT C103cola**  
 Printed: 3/07/2020

Environment, Land, Water and Planning

