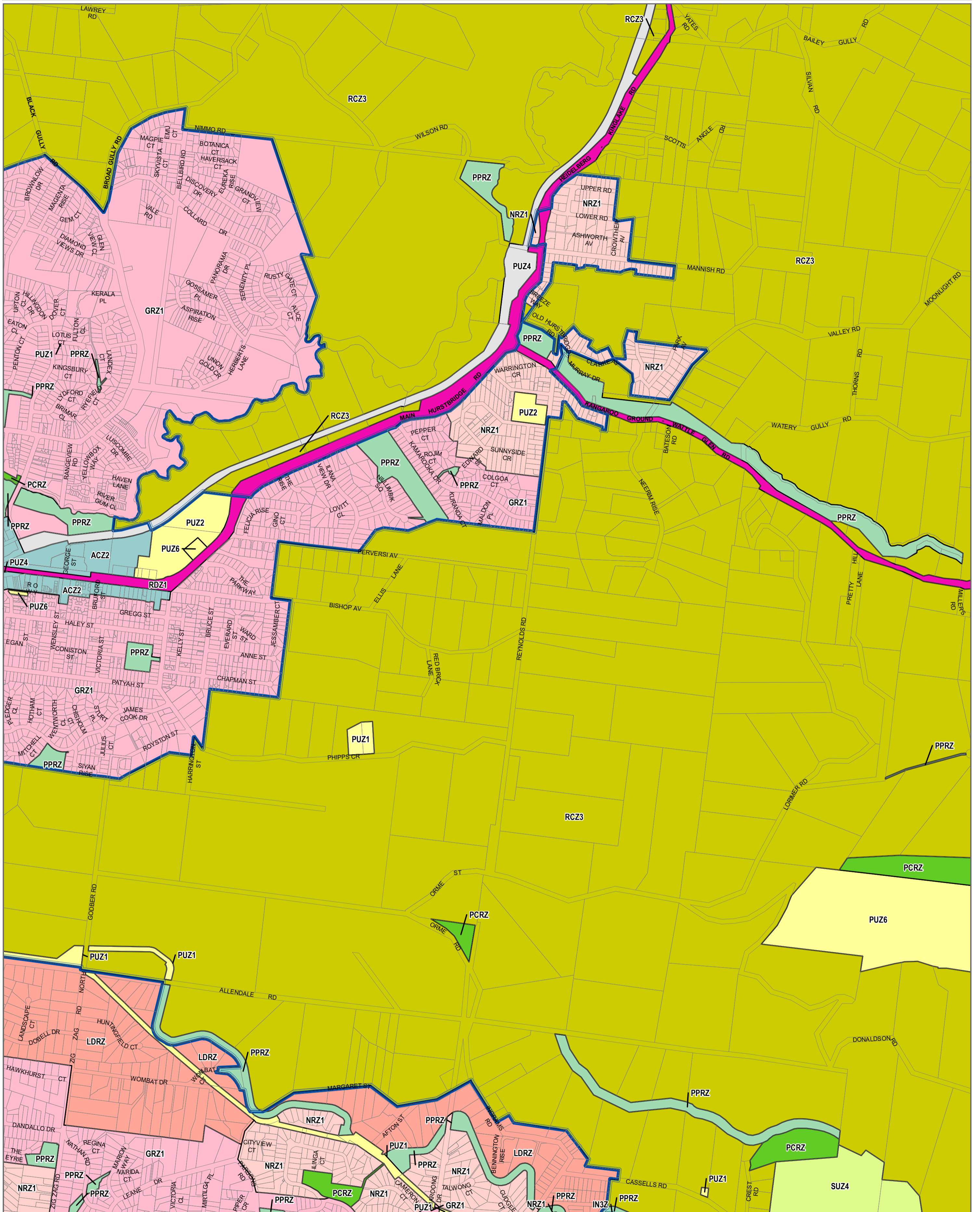


# NILLUMBIK PLANNING SCHEME - LOCAL PROVISION



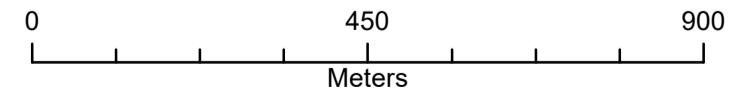
**LEGEND**

ACZ - Activity Centre Zone, ACZ	PUZ1 - Public Use Zone - Service and Utility
GRZ - General Residential Zone	PUZ2 - Public Use Zone - Education
IN3Z - Industrial 3 Zone	PUZ4 - Public Use Zone - Transport
LDRZ - Low Density Residential Zone	PUZ6 - Public Use Zone - Local Government
NRZ - Neighbourhood Residential Zone	RCZ - Rural Conservation Zone
PCRZ - Public Conservation and Resource Zone	RDZ1 - Road Zone - Category 1
PPRZ - Public Park and Recreation Zone	SUZ - Special Use Zone



**Disclaimer**  
 This publication may be of assistance to you but the State of Victoria and its employees do not guarantee that the publication is without flaw of any kind or is wholly appropriate for your particular purposes and therefore disclaims all liability for any error, loss or other consequence which may arise from you relying on any information in this publication.

© The State of Victoria Department of Environment, Land, Water and Planning 2020



Australian Map Grid Zone 55



Planning Group  
**AMENDMENT C117nill Part 1**  
 Printed: 31/01/2020



Environment,  
Land, Water  
and Planning

INDEX TO ADJOINING SCHEME MAPS

