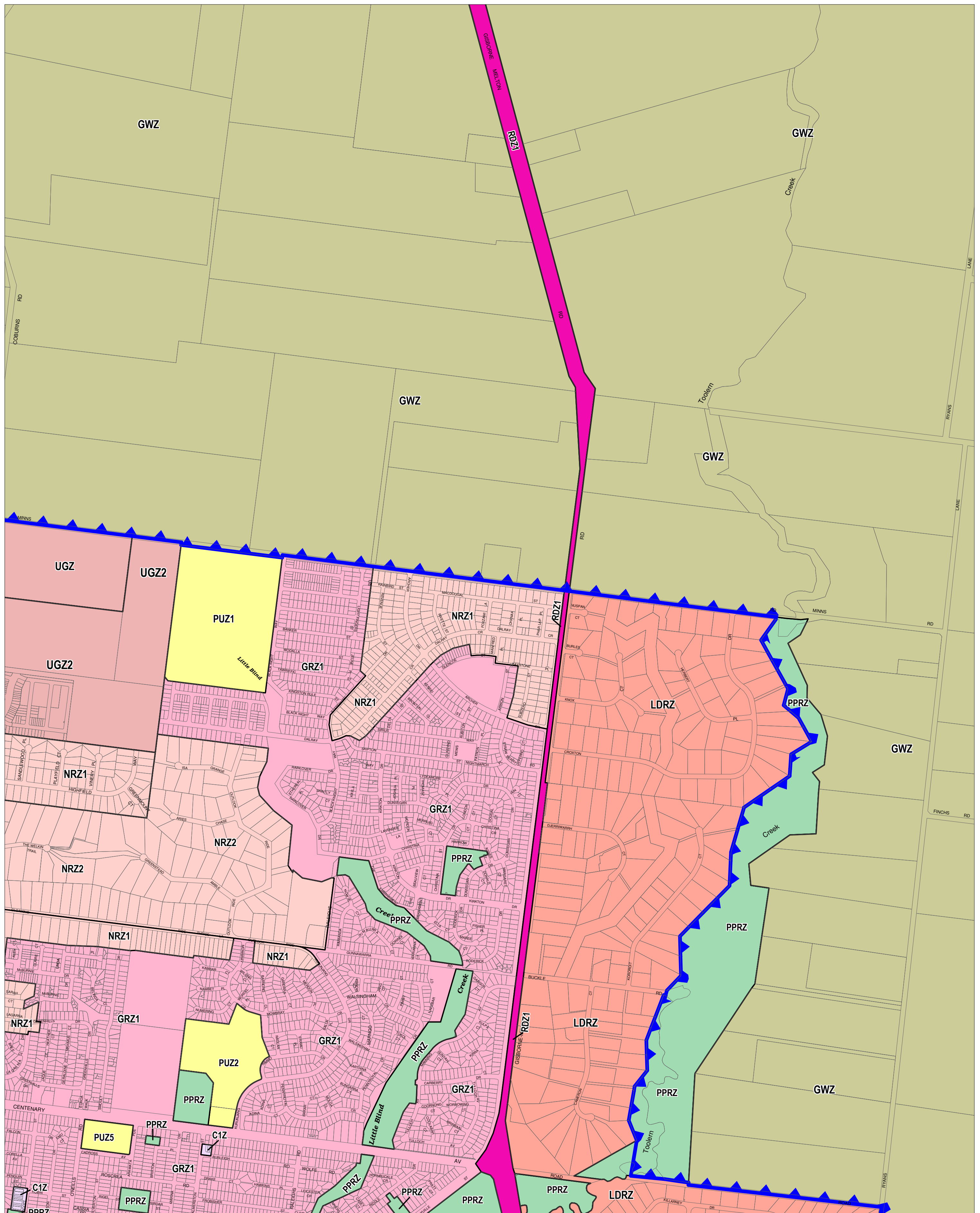


# MELTON PLANNING SCHEME - LOCAL PROVISION



This publication is copyright. No part may be reproduced by any process except in accordance with the provisions of the Copyright Act. © State of Victoria. This map should be read in conjunction with additional Planning Overlay Maps (if applicable) as indicated on the INDEX TO MAPS.

<b>Commercial</b> C1Z Commercial 1 Zone	<b>Rural</b> LDRZ Low Density Residential Zone NRZ1 Neighbourhood Residential Zone - Schedule 1 NRZ2 Neighbourhood Residential Zone - Schedule 2
<b>Public Land</b> PPRZ Public Park And Recreation Zone PUZ5 Public Use Zone - Cemetery/crematorium	<b>Special Purpose</b> GWZ Green Wedge Zone UGZ Urban Growth Zone UGZ2 Urban Growth Zone - Schedule 2
<b>Public Use Zone - Education</b> PUZ2 Public Use Zone - Education <b>Public Use Zone - Service And Utility</b> PUZ1 Public Use Zone - Service And Utility	
<b>Road Zone - Category 1</b> RDZ1 Road Zone - Category 1	
<b>Residential</b> GRZ1 General Residential Zone - Schedule 1	

200 0 200 400 600 800 1000 m  
AUSTRALIAN MAP GRID ZONE 55

State Government Victoria

INDEX TO ADJOINING METRIC SERIES MAP

1	2
5	6
7	8
9	10
11	12
13	14

Printed: 21/7/2014

AMENDMENT C157