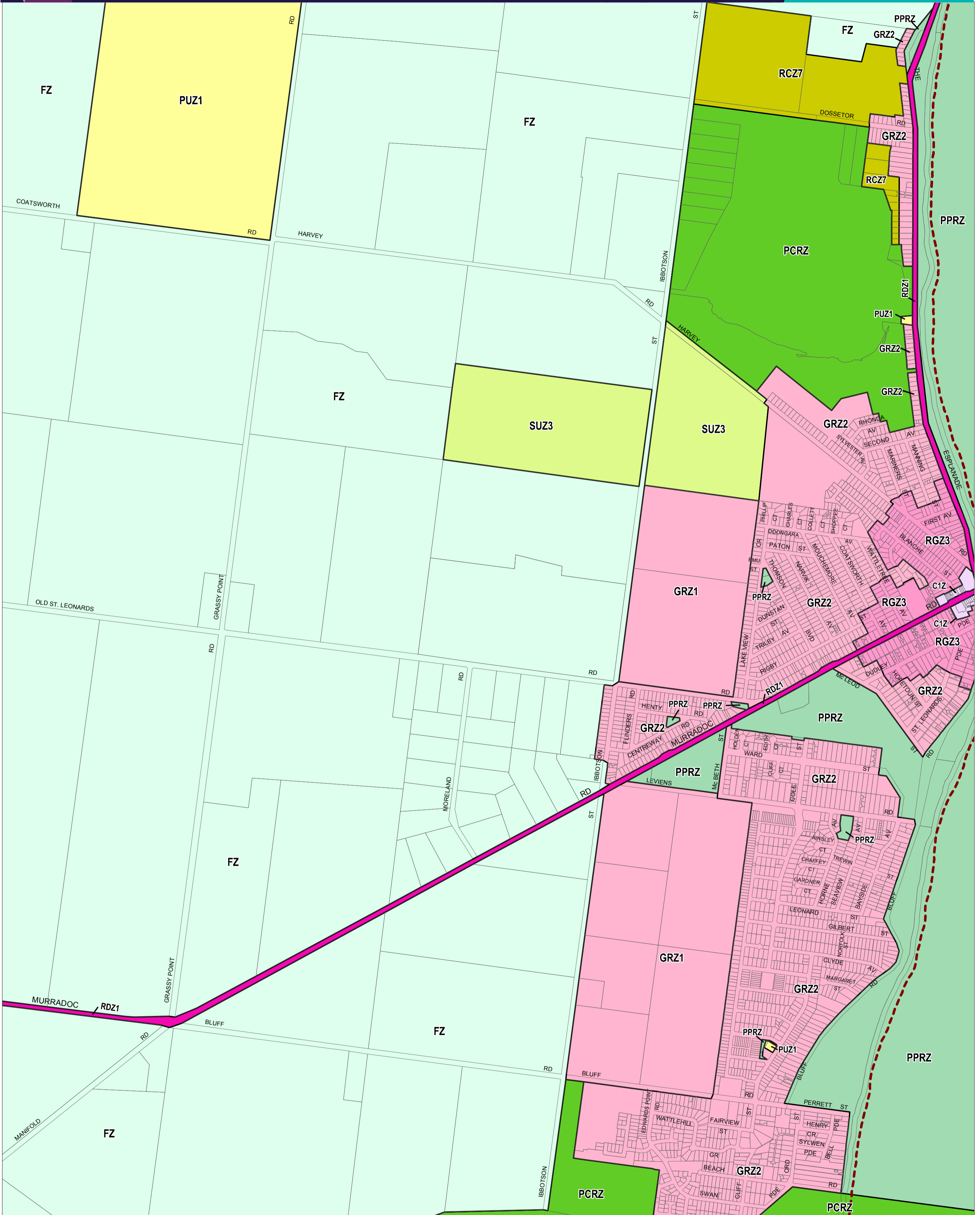


GREATER GEELONG PLANNING SCHEME - LOCAL PROVISION



This publication is copyright. No part may be reproduced by any process except in accordance with the provisions of the Copyright Act 1968 State of Victoria.

This map should be read in conjunction with additional Planning Overlay Maps (if applicable) as indicated on the INDEX TO MAPS.

- Commercial**
- C1Z Commercial 1 Zone
- Public Land**
- PCRZ Public Conservation And Resource Zone
- PPRZ Public Park And Recreation Zone
- PUZ1 Public Use Zone - Service And Utility
- RDZ1 Road Zone - Category 1
- Residential**
- GRZ1 General Residential Zone - Schedule 1
- GRZ2 General Residential Zone - Schedule 2
- GRZ3 Residential Growth Zone - Schedule 3
- Rural**
- FZ Farming Zone
- RCZ7 Rural Conservation Zone - Schedule 7
- Special Purpose**
- SUZ3 Special Use Zone - Schedule 3

Municipal Boundary (If shown)

Australian Map Grid Zone 55
 PREPARED BY: Planning Mapping Services



Printed: 23/2/2017

AMENDMENT C328 (PART 2)



Environment, Land, Water and Planning

INDEX TO ADJOINING SCHEME MAPS

| | | | |
|----|----|----|----|
| 1 | 2 | 3 | 4 |
| 5 | 6 | 7 | 8 |
| 9 | 10 | 11 | 12 |
| 13 | 14 | 15 | 16 |
| 17 | 18 | 19 | 20 |
| 21 | 22 | 23 | 24 |
| 25 | 26 | 27 | 28 |
| 29 | 30 | 31 | 32 |
| 33 | 34 | 35 | 36 |
| 37 | 38 | 39 | 40 |
| 41 | 42 | 43 | 44 |
| 45 | 46 | 47 | 48 |
| 49 | 50 | 51 | 52 |
| 53 | 54 | 55 | 56 |
| 57 | 58 | 59 | 60 |
| 61 | 62 | 63 | 64 |
| 65 | 66 | 67 | 68 |
| 69 | 70 | 71 | 72 |
| 73 | 74 | 75 | 76 |
| 77 | 78 | 79 | 80 |
| 81 | 82 | 83 | 84 |
| 85 | 86 | 87 | 88 |
| 89 | 90 | 91 | 92 |